



# 590 MISSOURI AVENUE SUITE 205

In The Water Tower Square Business Park



FOR FURTHER  
INFORMATION, CONTACT:

**Cory Hoehn**  
812-288-9057  
cory@watertowersquare.com

**Kyle Hoehn**  
812-288-9057  
kyle@watertowersquare.com

**THE CORNERSTONE GROUP**  
300 Missouri Avenue Suite 102  
Jeffersonville, IN 47130  
812-288-9057  
812-284-8346 fax

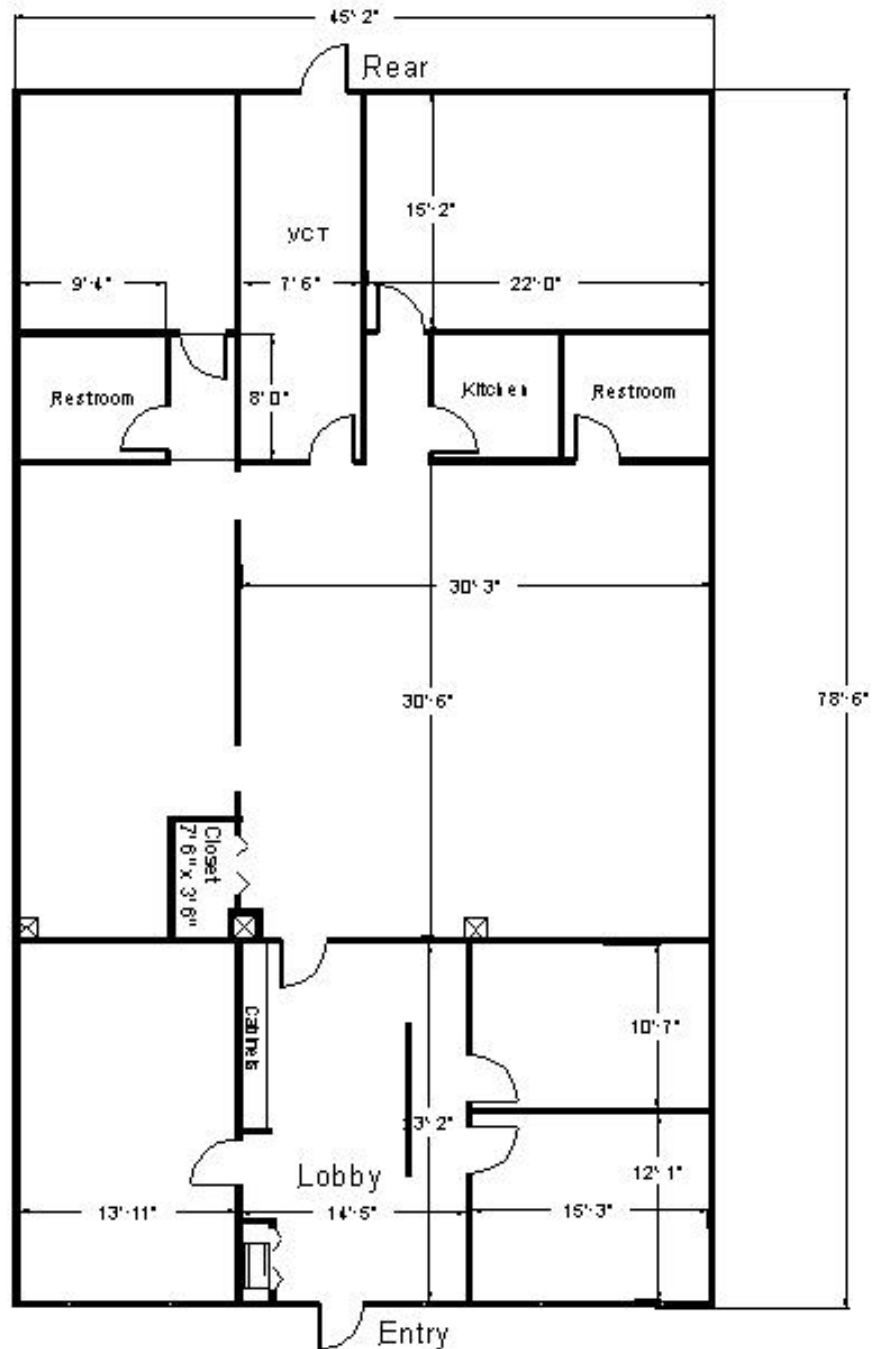
- ◆ 3,600 SF available
- ◆ Features both open and large private offices, 2 restrooms, conference room, and breakroom
- ◆ Vaulted ceiling and clerestory glass allow natural light to pour throughout the space
- ◆ Highly visible location with exceptional access to I-65 and U.S. 31
- ◆ Handicap accessible
- ◆ Terrific signage opportunity
- ◆ Ample free, lighted parking
- ◆ Broadband internet access
- ◆ 24/7/365 access

**FOR MORE INFORMATION AND AVAILABLE SPACE, LOG ONTO [WWW.WATERTOWERSQUARE.COM](http://WWW.WATERTOWERSQUARE.COM)**



# 590 MISSOURI AVENUE SUITE 205

In The Water Tower Square Business Park



FOR FURTHER  
INFORMATION, CONTACT:

**Cory Hoehn**  
812-288-9057  
cory@watertowersquare.com

**Kyle Hoehn**  
812-288-9057  
kyle@watertowersquare.com

THE CORNERSTONE GROUP  
300 Missouri Avenue Suite 102  
Jeffersonville, IN 47130  
812-288-9057  
812-284-8346 fax

FOR MORE INFORMATION AND AVAILABLE SPACE, LOG ONTO [WWW.WATERTOWERSQUARE.COM](http://WWW.WATERTOWERSQUARE.COM)