



590 MISSOURI AVENUE SUITE 206

In The Water Tower Square Business Park

Medical Office Space Available



FOR FURTHER
INFORMATION, CONTACT:

Cory Hoehn
812-288-9057
cory@watertowersquare.com

Kyle Hoehn
812-288-9057
kyle@watertowersquare.com

THE CORNERSTONE GROUP
300 Missouri Avenue Suite 102
Jeffersonville, IN 47130
812-288-9057
812-284-8346 fax

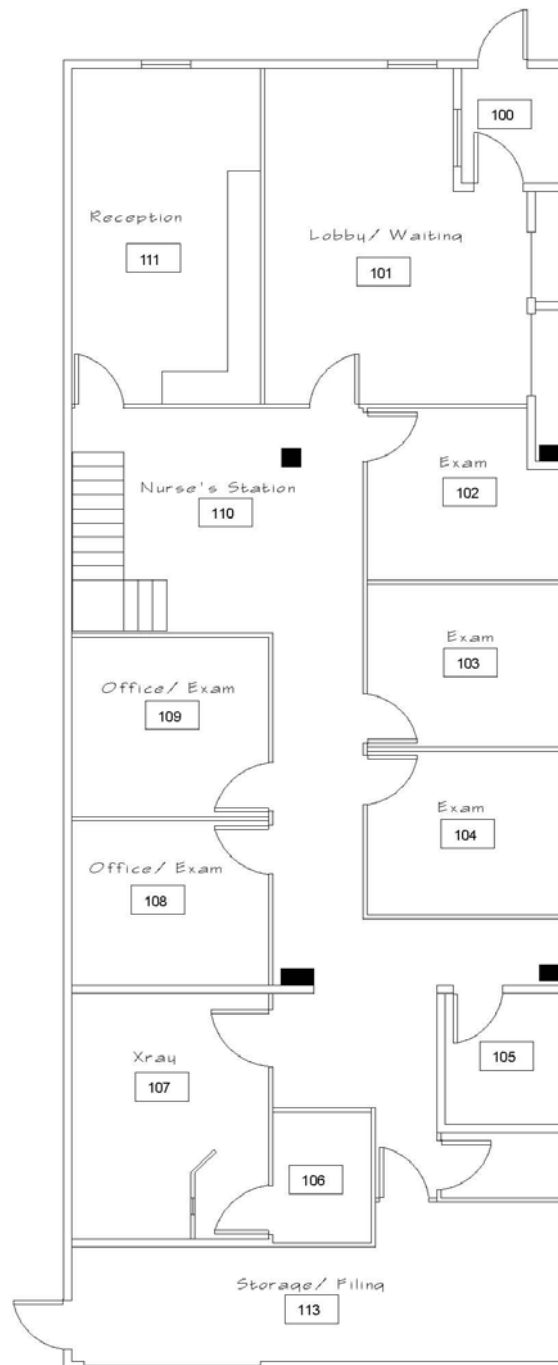
- ◆ 2,800 SF available
- ◆ Former spine surgeon's office; ideal for another physician, dentist, or chiropractor
- ◆ Includes 5 exam rooms, x-ray room, large reception desk and lobby, plenty of file storage space, and mezzanine with break room and office
- ◆ Highly visible location with exceptional access to I-65 and U.S. 31
- ◆ Handicap accessible
- ◆ Terrific signage opportunity
- ◆ Ample free, lighted parking
- ◆ High-speed internet access available
- ◆ 24/7/365 access

FOR MORE INFORMATION AND AVAILABLE SPACE, LOG ONTO WWW.WATERTOWERSQUARE.COM



590 MISSOURI AVENUE SUITE 206

In The Water Tower Square Business Park



FOR FURTHER
INFORMATION, CONTACT:

Cory Hoehn
812-288-9057
cory@watertowersquare.com

Kyle Hoehn
812-288-9057
kyle@watertowersquare.com

THE CORNERSTONE GROUP
300 Missouri Avenue Suite 102
Jeffersonville, IN 47130
812-288-9057
812-284-8346 fax

FOR MORE INFORMATION AND AVAILABLE SPACE, LOG ONTO WWW.WATERTOWERSQUARE.COM